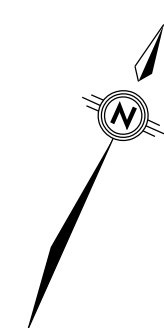


NOTE: The location of utilities is approximate only, the exact location should be determined by consulting the municipal authorities and utility companies concerned. The contractor shall prove the location of utilities and shall be responsible for adequate protection from damage.

No.	Description	By	Date (dd/mm/yy)
1	ISSUED FOR PUBLIC OPEN HOUSE	G.B.	29.01.18

NOT FOR CONSTRUCTION

NOTE: FULL ROAD CLOSURE
CLOSURE WILL MOVE FROM WEST TO EAST AS
CONSTRUCTION PROGRESSES.



44+915

APPALOOSA
PARK

44+950

APPALOOSA
DRIVE

MATCH LINE STA. 45+000

PROPOSED 2100mm \varnothing STORM SEWER

100mm STORM SEWER
100mm WATERMAIN
300mm WATERMAIN
300mm GAS
300mm GAS

ASPHALT

PLAY STRUCT

ASPHALT

ASPHALT

ASPHALT

ASPHALT

ASPHALT

ASPHALT

ASPHALT

ASPHALT

ASPHALT

ASPHALT

ASPHALT

ASPHALT

ASPHALT

ASPHALT

ASPHALT

ASPHALT

ASPHALT

ASPHALT

ASPHALT

ASPHALT

ASPHALT

ASPHALT

ASPHALT

ASPHALT

ASPHALT

ASPHALT

ASPHALT

ASPHALT

ASPHALT

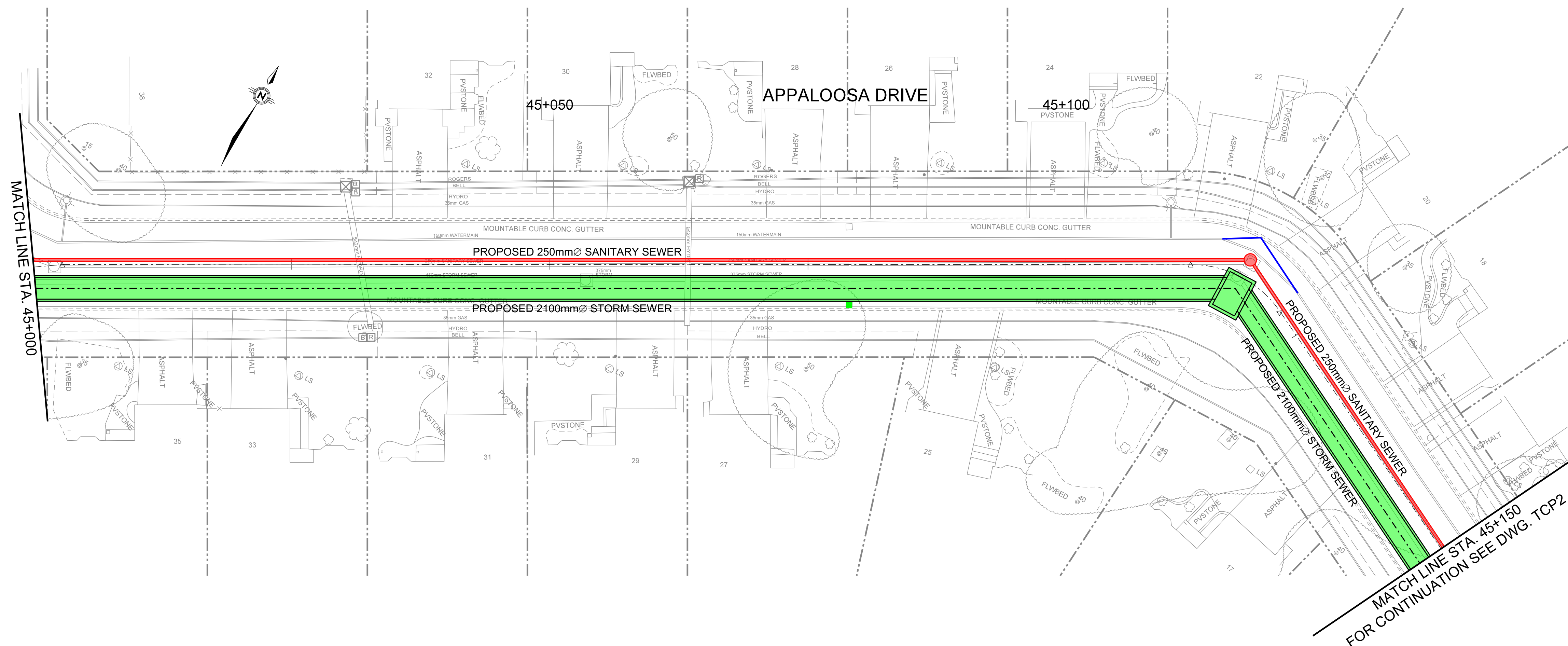
ASPHALT

ASPHALT

ASPHALT

ASPHALT

ASPHALT



ISSUED

BRIDLEWOOD AND CRAIG HENRY
WET WEATHER INFRASTRUCTURE
UPGRADES



TRAFFIC CONTROL PLAN
APPALOOSA DRIVE
STA. 45+150 TO STA. 45+300 /
PALOMINO DRIVE
STA. 49+975 TO STA. 50+075

Contract No. ISD17-5012 Dwg. No. TCP2
Sheet - of -

Asset No. _____
Asset Group _____
Des. G.B. Chk'd. K.L.
Dwn. I.M. Chk'd. K.L.
Utility Circ. No. _____ Index No. _____
Const. Inspector _____

**Robinson
Consultants**

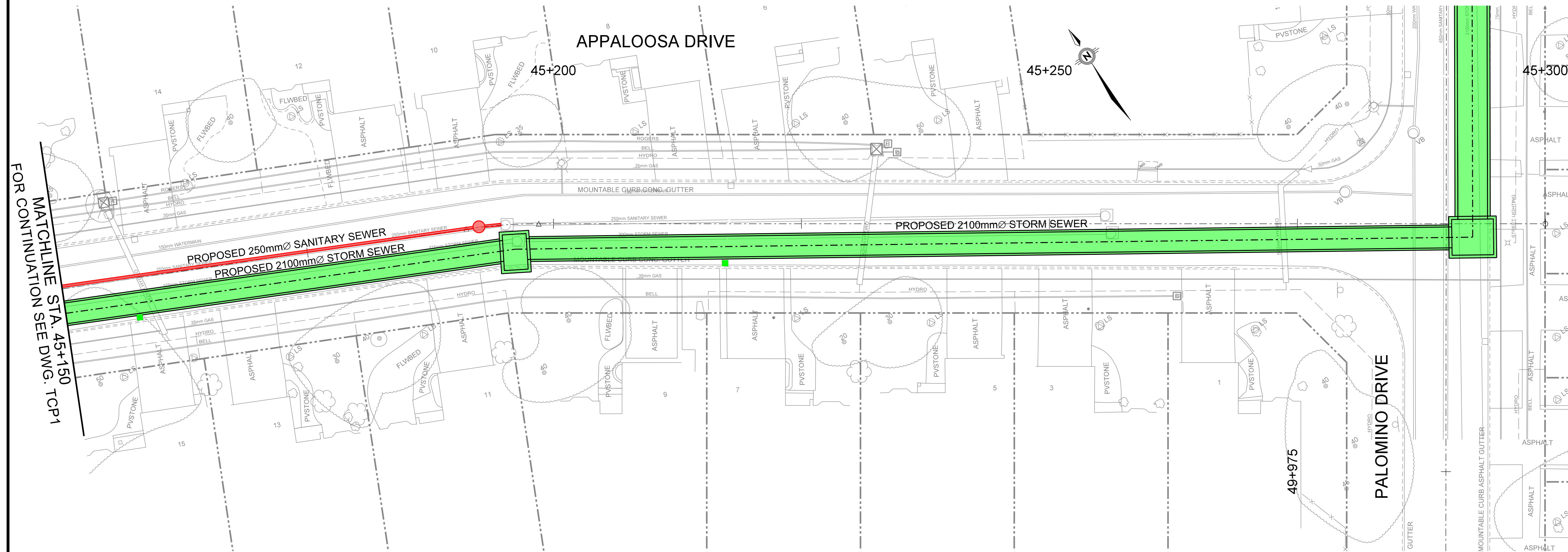
Scale: HORIZONTAL
0m 5 10

NOTE: The location of utilities is approximate only, the exact location should be determined by consulting the municipal authorities and utility companies concerned. The contractor shall prove the location of utilities and shall be responsible for adequate protection from damage.

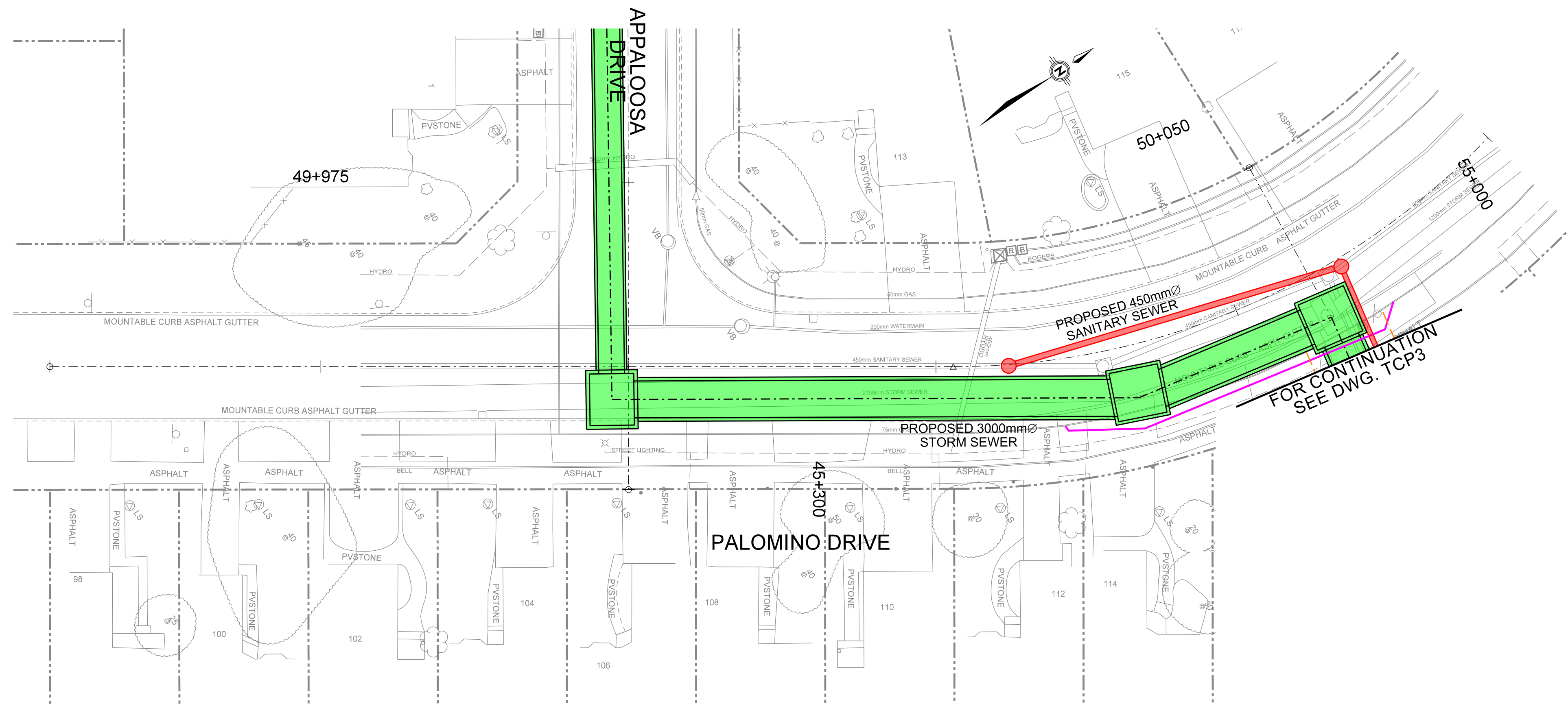
No.	Description	By	Date (dd/mm/yy)
1	ISSUED FOR PUBLIC OPEN HOUSE	G.B.	29.01.18
REVISIONS			

NOT FOR CONSTRUCTION

NOTE: FULL ROAD CLOSURE.
CLOSURE WILL MOVE FROM WEST TO EAST AS
CONSTRUCTION PROGRESSES.



FOR CONTINUATION
MATCHLINE STA. 45+150
SEE DWG. TCP1



FOR CONTINUATION
SEE DWG. TCP3

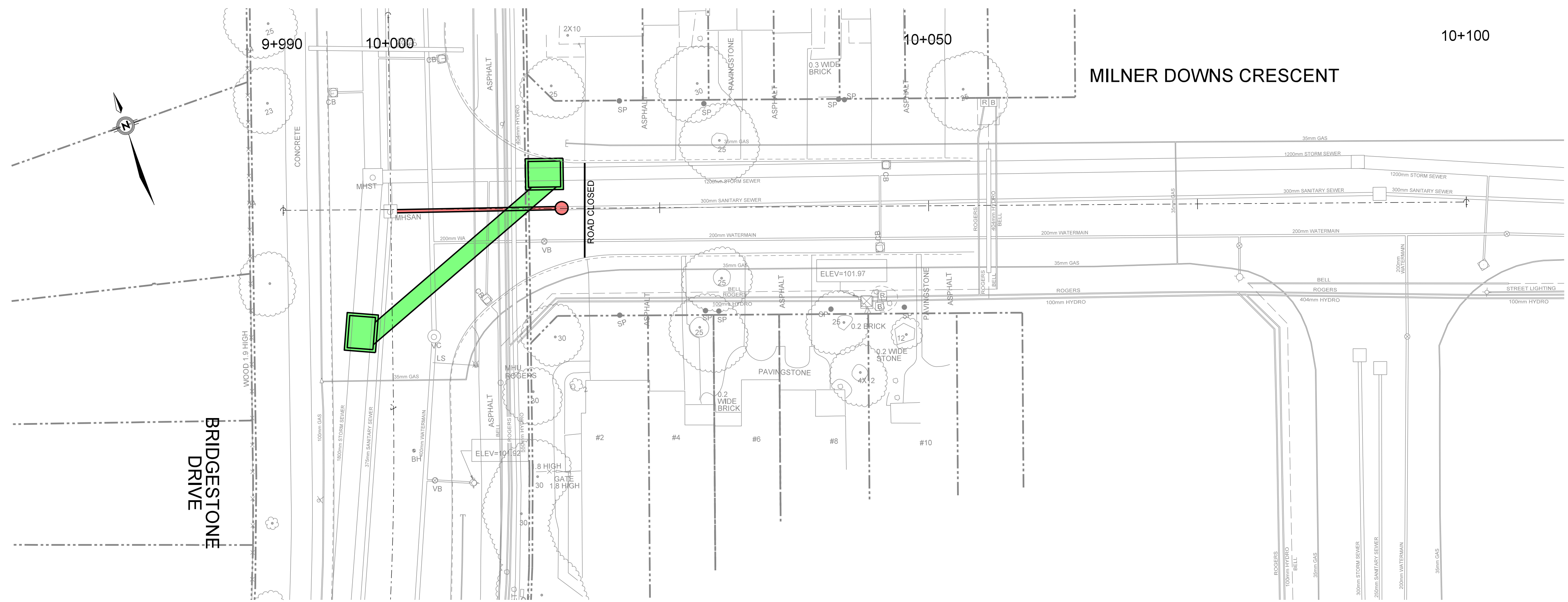
ISSUED

NOTE: The location of utilities is approximate only, the exact location should be determined by consulting the municipal authorities and utility companies concerned. The contractor shall prove the location of utilities and shall be responsible for adequate protection from damage.

No.	Description	By	Date (dd/mm/yy)
1	ISSUED FOR PUBLIC OPEN HOUSE	G.B.	29.01.18

NOT FOR CONSTRUCTION

NOTE: ONE LANE OPEN AT ALL TIMES WITH FLAG PERSON.
TWO LANES OPEN OUTSIDE OF CONSTRUCTION HOURS.



ISSUED