

WELCOME

# **VEGETATION MAINTENANCE IN BRIDLEWOOD**

# VEGETATION MAINTENANCE IN BRIDLEWOOD

## MEET OUR PROJECT TEAM TO DISCUSS:

- Upcoming work in your community
- Project timeline
- What to expect during the work
- How we plan to communicate with you

# PROJECT OVERVIEW

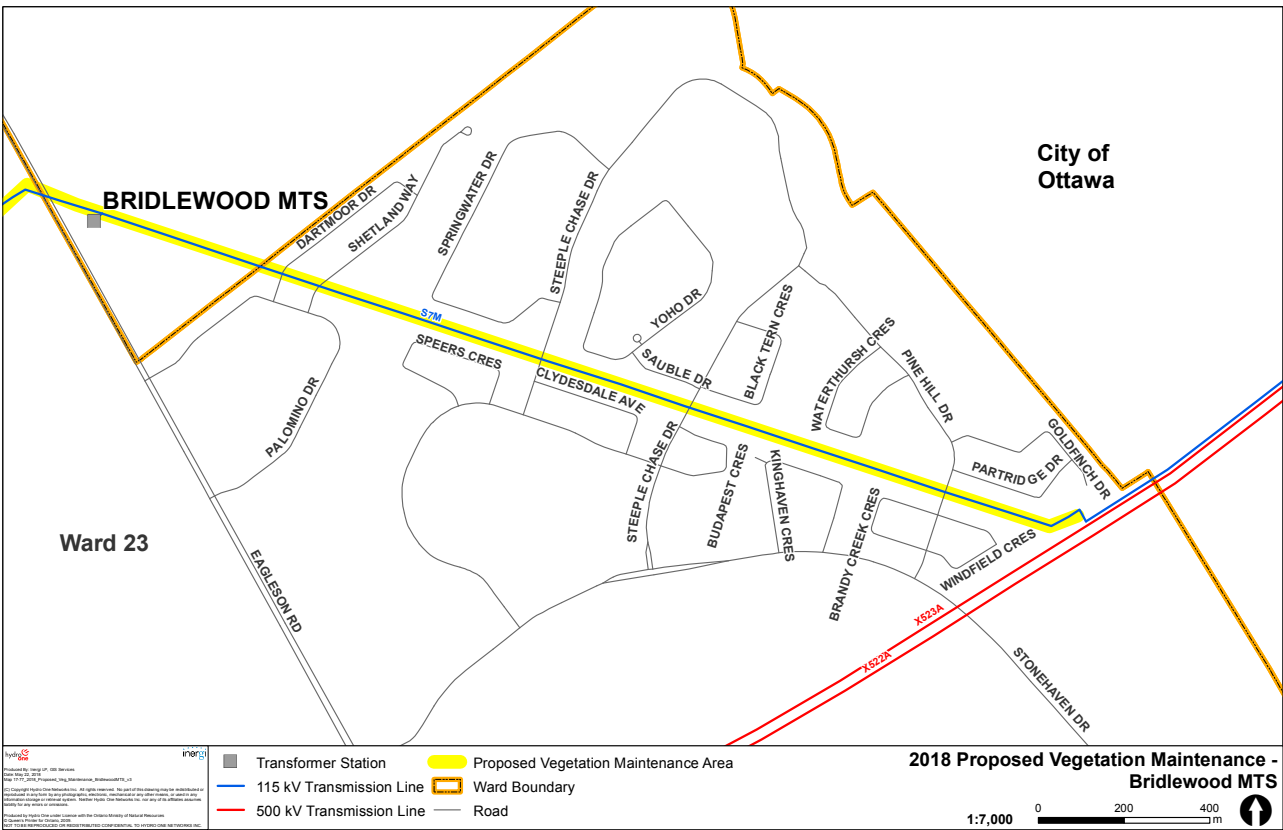
Hydro One is responsible for keeping power lines clear of vegetation to prevent tree-related outages. This work helps to ensure a safe and reliable supply of electricity to homes and businesses.

Safety is our top priority, and we want to ensure that this multi-use space is safe and enjoyable for your community.

In consideration of the unique feature of this corridor and the community feedback, we will move to a three-year maintenance cycle for 2018 and 2021, with a plan to evaluate this approach in six years.



# PROJECT MAP



# WHAT TO EXPECT

## IN ORDER TO COMPLETE WORK IN BRIDLEWOOD, OUR SCOPE OF WORK WILL INCLUDE:

- Mechanical removal of trees, brush and stumps;
- Manual removal and/or trimming of trees; and
- Remediation of the corridor in spring 2019.

Manual equipment such as chainsaws and pruners, and mechanical equipment like bulldozers and grinders will be used to treat vegetation and complete work.

Consistent with industry best practices work areas will be assessed ahead of time and in some cases, wood will be left on-site.



# PROJECT TIMELINE

If work is required on or adjacent to your property, Hydro One will notify you to discuss the best vegetation maintenance approach.

Work is expected to begin in late-November, and we estimate that it will take one week to complete, weather permitting. Hydro One will return in the spring to discuss and implement remediation efforts.

# MECHANICAL VEGETATION TREATMENT

Mechanical treatment of vegetation involves the removal of the entire root system of trees and brush. Our crews will use grinders, bulldozers and excavators to complete this work.

Mechanical work is visually impactful when first completed, but helps minimize the need for herbicides and provides an optimal base for remediation efforts and the establishment of pollinator seed.



# WHAT'S NEXT

We recognize that this transmission corridor provides a vital greenspace in the community.

We will continue to work with you in 2019 to discuss options for remediation and beautification, including:

- Reseeding with pollinator seed mix that is native to Ontario and supports bird and butterfly species.
- Identifying property lines where planting compatible species to promote visual screening is possible.





# KEEPING IN TOUCH

Being a good local community partner is important to us and we are committed to keeping you informed.

Please send inquiries to Hydro One's Community Relations team

**Tel: 1.877.345.6799**

**Email: [Community.Relations@HydroOne.com](mailto:Community.Relations@HydroOne.com)**

**THANK YOU FOR JOINING US!**



**HydroOne.com**



**Customer Communications Centre**

1-888-664-9376

Monday – Friday 7.30AM – 8PM EST



**Power outages & emergencies**

1-800-434-1235

24 hours/7 days



**Hydro One Networks Inc.,**

P.O. Box 5700, Markham, ON L3R 1C8

**Follow us**



**@HydroOneOfficial**



**@HydroOne**



**@HydroOneOfficial**