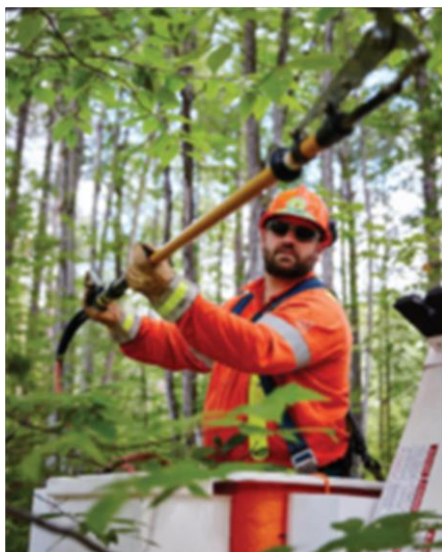
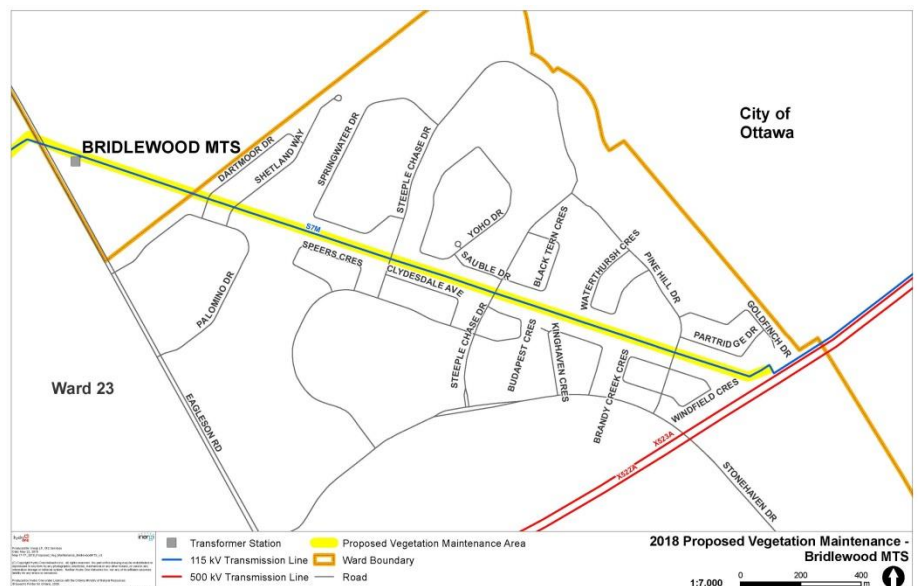


## 2018 Vegetation Maintenance Working together in Kanata

Hydro One is responsible for keeping power lines clear of vegetation to prevent tree-related outages. This work helps ensure our customers, employees and the public are safe, and that there is a reliable supply of electricity to homes and businesses in your community.

This past spring, Hydro One began vegetation maintenance on the transmission corridor between **Bridlewood Municipal Transformer Station (MTS)** and the **junction at Goldfinch Drive**. While crews continue to prioritize the removal of downed trees and the restoration of Merivale TS following recent weather events in the Ottawa area, they will also be completing scheduled work on this line by the end of the year.



### Safety is our top priority

Our goal is to achieve safe clearances between electrical equipment and vegetation, while being a good local community partner and ensuring this multi-use space is safe and enjoyable for your community. In consideration of the unique feature of this corridor and ongoing community feedback, we will move to a three-year maintenance cycle for 2018 and 2021, with a plan to evaluate this approach in six years.

## What to expect

In order to complete vegetation maintenance in Bridlewood, our scope of work will include:

- Mechanical removal of trees, brush and stumps;
- Manual removal and/or trimming of trees; and
- Remediation of the corridor in spring 2019.

If work is required on or adjacent to your property, a Hydro One Forestry Services representative will contact you in advance.

## Mechanical vegetation management

Mechanical treatment of vegetation involves the removal of the entire root system of trees and brush. Our crews will use grinders, bulldozers and excavators to complete this work.



Mechanical work is visually impactful when first completed, but helps minimize the need for herbicides and provides an optimal base for remediation efforts and the establishment of pollinator seed.

## What's next?

We recognize that this transmission corridor provides a vital green space in Bridlewood, and we will continue to work with you in 2019 to discuss options for remediation and beautification, including:

- Reseeding with pollinator seed mix that is native to Ontario and supports bird and butterfly species; and
- Identifying property lines where planting compatible species to promote visual screening is possible.

### **For more information, please contact:**

Katrina Kim, Community Relations

Tel: 1-877-345-6799

Email: [Community.Relations@HydroOne.com](mailto:Community.Relations@HydroOne.com)